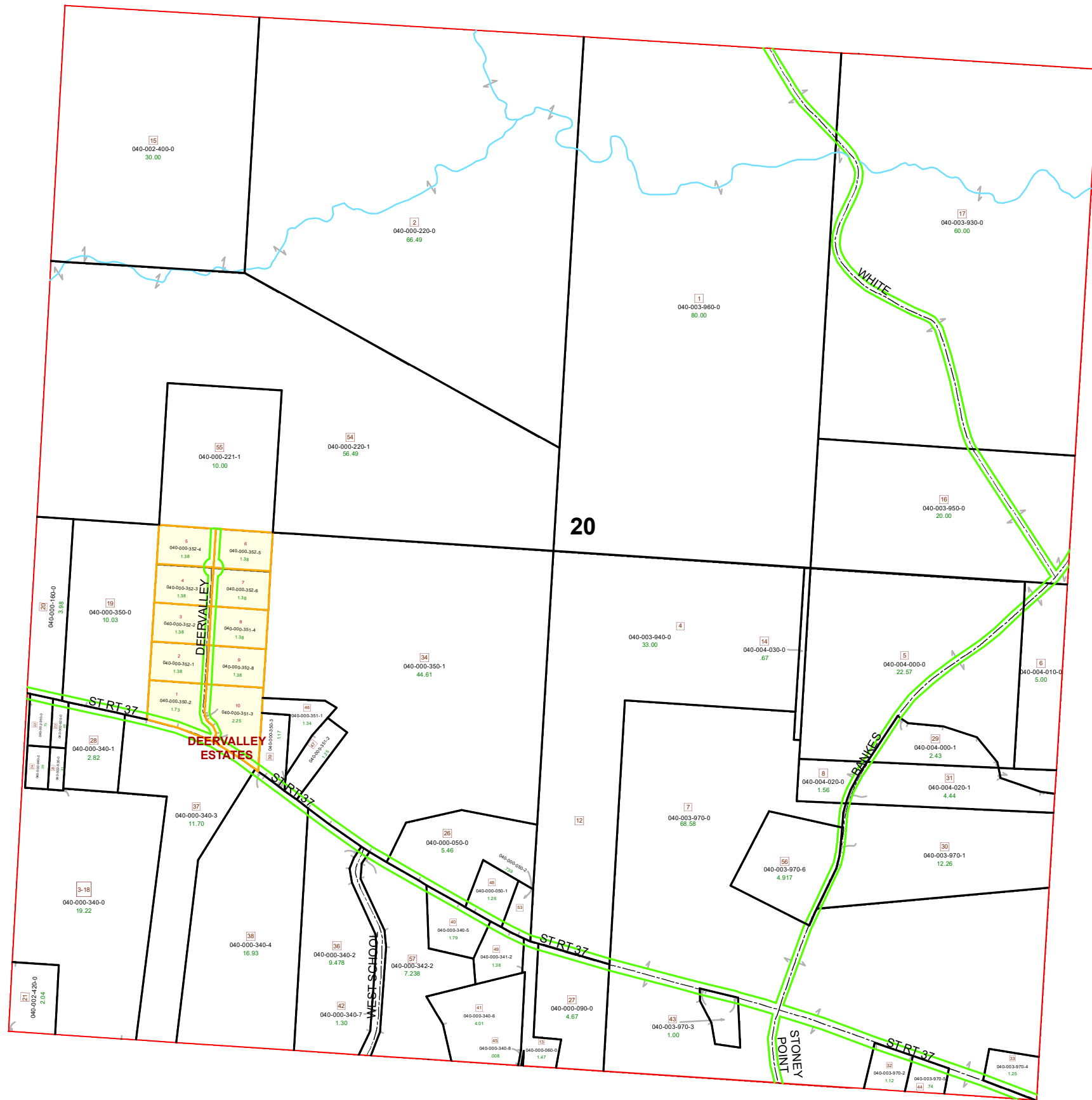
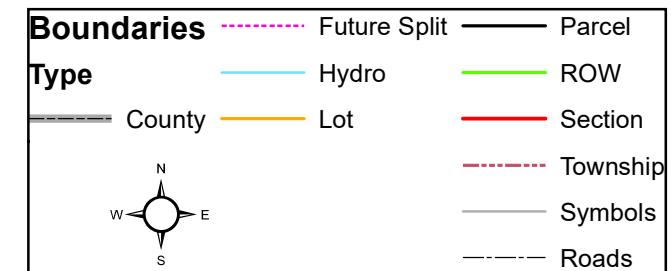


DEERFIELD TOWNSHIP SECTION 20 R13- TWP 9 MORGAN COUNTY, OH

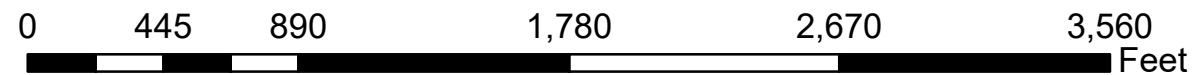


PIN	VOL	PAGE	Owner	LegalDescr	Acres
040-000-350-3	OR227	2676	ALTIER SHAWN M	R13 T09 S20 SD 39	1.163
040-000-351-1	OR227	2676	ALTIER SHAWN M	R13 T09 S20 SD 46	1.343
040-000-050-2	OR226	2703	ALTIER SHAWN M & JUSTINA N & TIM	R13 T09 S20 SD 53	0.739
040-000-351-2	OR126	67	ALTIER TIMOTHY L	R13 T09 S20 SD 47	1.25
040-000-340-0	OR232	1369	ANDERSON BRUCE	R13 T09 S20 SD 3	18.986
040-000-220-0	OR215	3239	BANKES DAVID S & SHIRLEY	R13 T09 S20 SD 2 EX	53.92
040-000-220-1	OR226	1401	BANKES TAMERA J & DIANE E HORN	R13 T09 S20 SD 54	56.49
040-003-970-5	OR206	1885	CLEMENS CASEY M	R13 T09 S20 SD 44	0.74
040-004-020-0	D.V 201	675	CLEMENS FARMS INC	R13 T09 S20 SD 8	1.558
040-004-010-0	D.V 201	675	CLEMENS FARMS INC	R13 T09 S20 SD 6	5
040-004-000-0	D.V 201	675	CLEMENS FARMS INC	R13 T09 S20 SD 5	22.57
040-004-030-0	D.V 201	675	CLEMENS FARMS INC	R13 T09 S20 SD 14	0.67
040-003-940-0	OR226	2706	CLEMENS FARMS INC	R13 T09 S20 SD 4-12	33
040-003-950-0	D.V 201	675	CLEMENS FARMS INC	R13 T09 S20 SD 16	20
040-003-930-0	D.V 201	675	CLEMENS FARMS INC	R13 T09 S20 SD 17	60
040-003-960-0	D.V 201	675	CLEMENS FARMS INC	R13 T09 S20 SD 1	80
040-003-970-0	OR226	2706	CLEMENS FARMS INC	R13 T09 S20 SD7	63.667
040-000-221-1	OR233	2375	COPELAND ADAM M & NICOLE M	R13 T09 S20 SD 55	10
040-000-340-2	OR231	5275	COPELAND DENNIS R & CAROLYN G	R13 T09 S20 SD 36 S	9.478
040-000-342-2	OR231	5275	COPELAND DENNIS R & CAROLYN G	R13 T9 S20 SD57	7.238
040-000-050-0	OR234	3218	COPELAND MICHAEL B & MELODY J	R13 T09 S20 SD 26	5.46
040-000-350-1	OR199	595	COPELAND MICHAEL B & MELODY J	R13 T09 S20 SD 34	44.611
040-000-341-2	OR156	673	CRAWFORD WILLIAM F & PATRICIA A	R13 T09 S20 SD 49 R	1.38
040-000-340-5	OR156	673	CRAWFORD WILLIAM F & PATRICIA A	R13 T09 S20 SD 40 R	1.793
040-003-970-2	OR233	4637	CYBULSKI CAROLYN M CYBULSKI Z	R13 T09 S20 SD 32	1.115
040-002-420-0	OR232	223	DUNLAP ARTHUR	R13 T09 S20 SD 21	2.04
040-002-400-0	OR27	731	ENDSLEY HUGH ERIC	R13 T09 S20 SD 15	30
040-000-340-6	OR188	118	HAMBEL CHRISTOPHER R & KACY M	R13 T09 S20 SD 41 S	4.015
040-000-160-0	OR228	484	JOHNSON TYLER A	R13 T09 S20 SD 20 E	3.976
040-003-970-6	OR226	3037	JOSH B DAVIS	R13 T09 S20 SD 56	4.917
040-003-970-3	OR227	928	KING DARRYL & PAMELA	R13 T09 S20 SD 43 S	1
040-000-340-7	OR60	256	MORGAN LOCAL SCHOOL DISTRICT	R13 T09 S20 SD 42	1.301
040-002-930-0	OR211	1756	MORIN LANCE B	R13 T09 S20 SD 25	0.41
040-002-940-0	OR211	1756	MORIN LANCE B	R13 T09 S20 SD 24	0.59
040-002-920-0	OR211	1756	MORIN LANCE B	R13 T09 S20 SD 23	0.48
040-002-910-0	OR211	1756	MORIN LANCE B	R13 T09 S20 SD 22	0.7
040-000-340-4	OR18	475	MURRELL GARY B & MIRIAM SUE	R13 T09 S20 SD 38	16.932
040-000-340-3	OR18	475	MURRELL GARY B & MIRIAM SUE	R13 T09 S20 SD 37	11.7

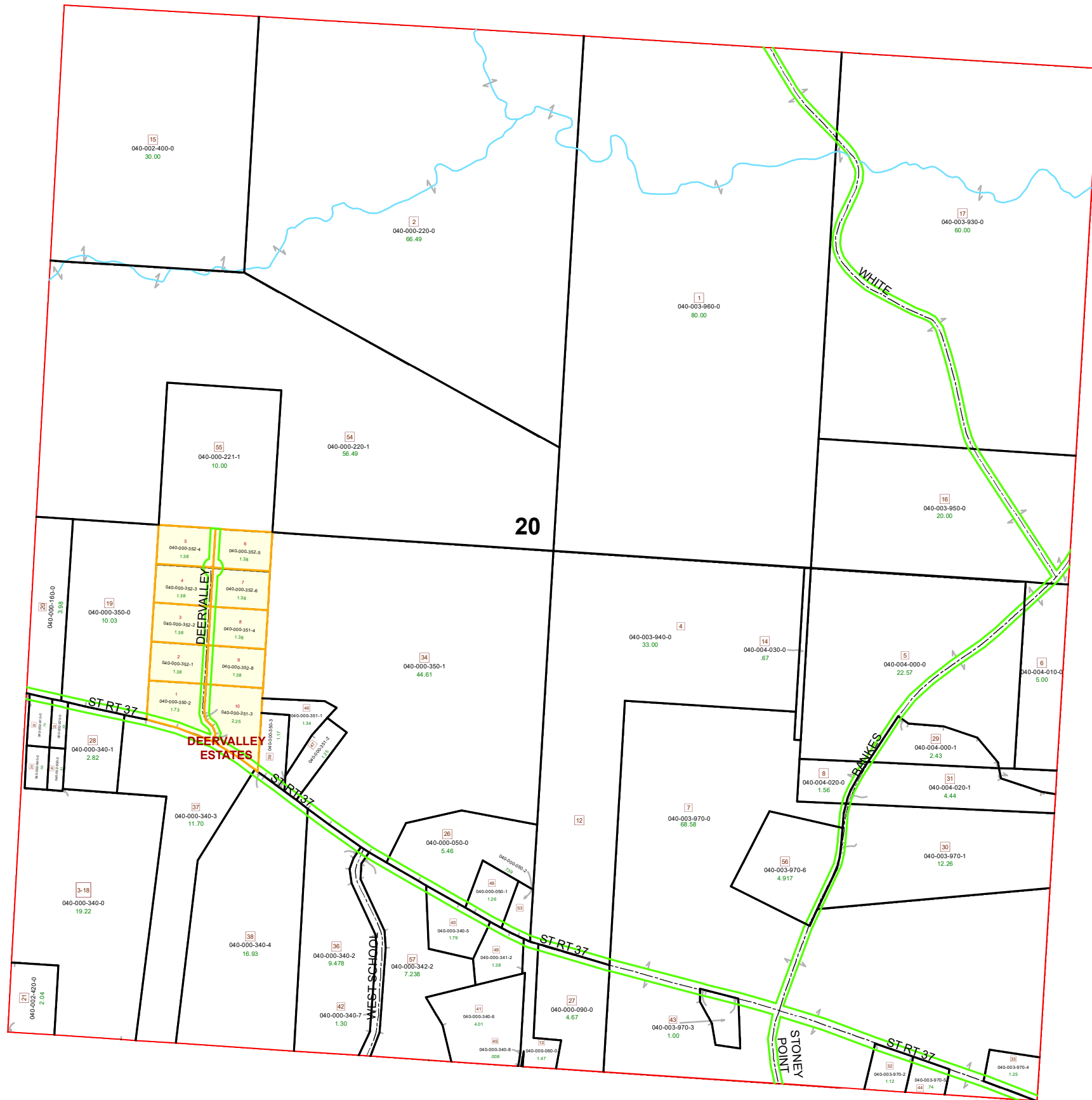


Disclaimer: The information that these maps contains is for reference purposes only. Please bring any erros to the attention of the Engineer's Office staff.

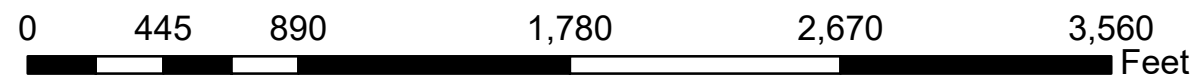
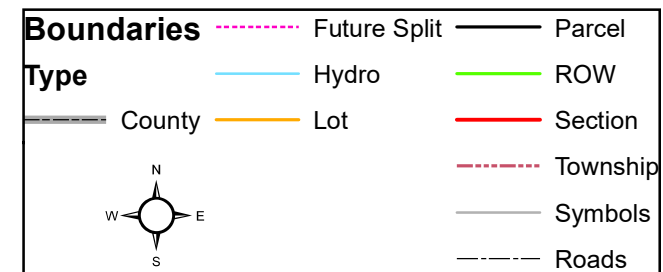
Thank you



DEERFIELD TOWNSHIP SECTION 20 R13- TWP 9 MORGAN COUNTY, OH



PIN	VOL	PAGE	Owner	LegalDescr	Acres
040-000-090-0	OR177	245	POLING CHERYL ANN & ROBERT E	R13 T09 S20 SD 27 S	4.667
040-000-060-0	OR177	245	POLING CHERYL ANN & ROBERT E	R13 T09 S20 SD 13 S	1.473
040-000-340-1	D.V 197	572	PORTERSVILLE EAST BRANCH WATE	R13 T09 S20 SD 28 E	2.82
040-000-350-0	OR16	251	TETER KENNETH M	R13 T09 S20 SD 19	10.029
040-000-050-1	OR221	791	THOMAS ADRIENNE	R13 T09 S20 SD 48	1.261
040-004-020-1	OR207	679	THOMAS NANCLYN J	R13 T09 S20 SD 31	4.442
040-004-000-1	OR207	679	THOMAS NANCLYN J	R13 T09 S20 SD 29	2.43
040-003-970-1	OR207	679	THOMAS NANCLYN J	R13 T09 S20 SD 30	12.258
040-003-970-4	OR154	277	WISE KENNETH DARYL ET 5 AL C/O F	R13 T09 S20 SD 33 U	1.248



Disclaimer: The information that these maps contains is for reference purposes only. Please bring any errors to the attention of the Engineer's Office staff.

Thank you